
Company Profile of **SAINT-WORKS CORPORATION**



SAINT-WORKS CORPORATION

Date of Establishment	November/1st/2006
Head Office	Daiki-building 3F 3-11-12 Hacchobori Chuo-ku Tokyo JAPAN Postal Code:104-0032
Osaka Office	Melody-Heim-Nakatsu 2nd building 507 1-12-11 Nakatsu Kita-ku Osaka JAPAN Postal Code:530-0071
Kanazawa Office	Kanazawa-minamityo-building 903 1-12 Kamitsutsumicho Kanazawa-shi Ishikawa JAPAN Postal Code:920-0869
Representative	President & Representative Director Noriyuki Ohnishi
Capital	¥50,000,000 (100% Invested by SAINT-CARE HOLDING CORPORATION)
Number of Employees	60 (In April/2023)
Business	<ul style="list-style-type: none"> ◆ Develop and Sell IT Systems for Care Industry ◆ Solution Services ◆ Work Life Balance Consulting

SAINT-WORKS CORPORATION belongs to SAINT-CARE GROUP which have over 600 nursing care offices in JAPAN.

What is "S u i s u i R e m o n" ?

"S u i s u i R e m o n" is the IT system for care industry. Japan has the care insurance system. Care Service Providers need to calculate for reward based on the care insurance law. "S u i s u i R e m o n" supports care service providers to calculate invoices, manage customers information, visiting schedule and so on.



Superiority of "S u i s u i R e m o n" is being able to see accounts receivable in various forms. It is difficult to manage accounts in the care insurance system, so we can support care service providers to manage their business efficiently.

Support services

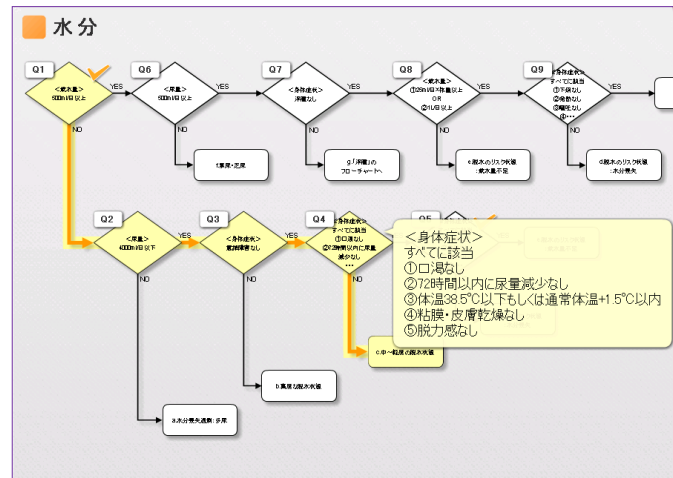
We visit customers and provide onsite support service to teach how to use "S u i s u i R e m o n" when our customers start to use it. We have our own remote support service which our customers can call when they want to ask how to use it. We update software monthly to implement new function requested by our customers.



What is “Kang no Aichan” ?

“Kang no Aichan” is the IT system for home-visit nursing.

“Kang no Aichan” supports home-visit nurse to assess patients level according to the assessment flow of home-visit nursing.

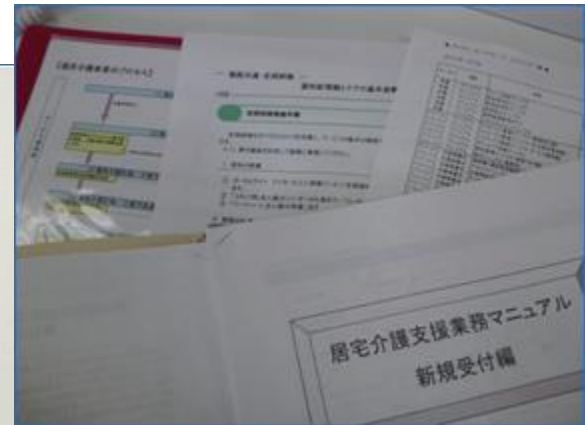
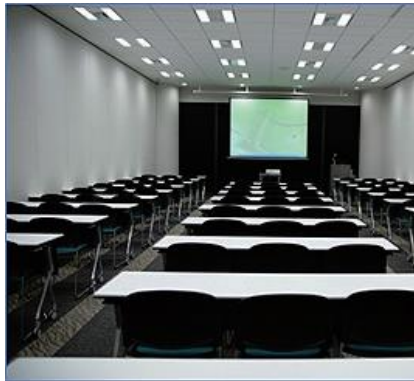


Superiority of “Kang no Aichan” is being able to see patients level assessment process. It is difficult to manage the quality of home-visit nursing, so we can support home-visit nurses for assessment and process standardization.

◆ Solution Services for Care Industry

<http://suisuiremon.saint-works.com/other-service>

We provide Solution Services which support care service providers to manage their business. We provide business forms and manuals for care business. We also hold seminars inviting lecturer who is famous in care industry.



Competitive advantage of our service is to provide various services with knowledge and experience that had been accumulated by providing shared services to Saint-care Group long time.

◆ Work Life Balance Consulting

<http://www.saint-works.com/wlb>

We offer Work Life Balance Consulting Service to companies. We support companies to establish the positive spiral which improve employee's work productivity and fulfill their life. Nowadays every companies are expected to reduce long-time work, promote female employees and improve high performance employee's retention.

We also consult work process which enable employees to keep their work and parents care at the same time. It is highly necessary services for JAPAN.



Superiority of our service is to provide various services with knowledge and experience that have been cultivated by Work Life Balance Project in our company which is popular in JAPAN.

◆ Work Life Balance Project in Saint-works

<http://www.saint-works.com/wlb-sw>

We have been promoted Work Life Balance Project since April/2012.

We are certified as a Work Life Balance Company by Cabinet Office, Tokyo prefecture, Chuo-ku and several organizations. National newspaper ,TV and many medias have published our practice as a good practice for Work Life Balance.



Superiority of our project is to reduce long-time work by only changing employee's mindset and reviewing their way of working without revising our personnel system.